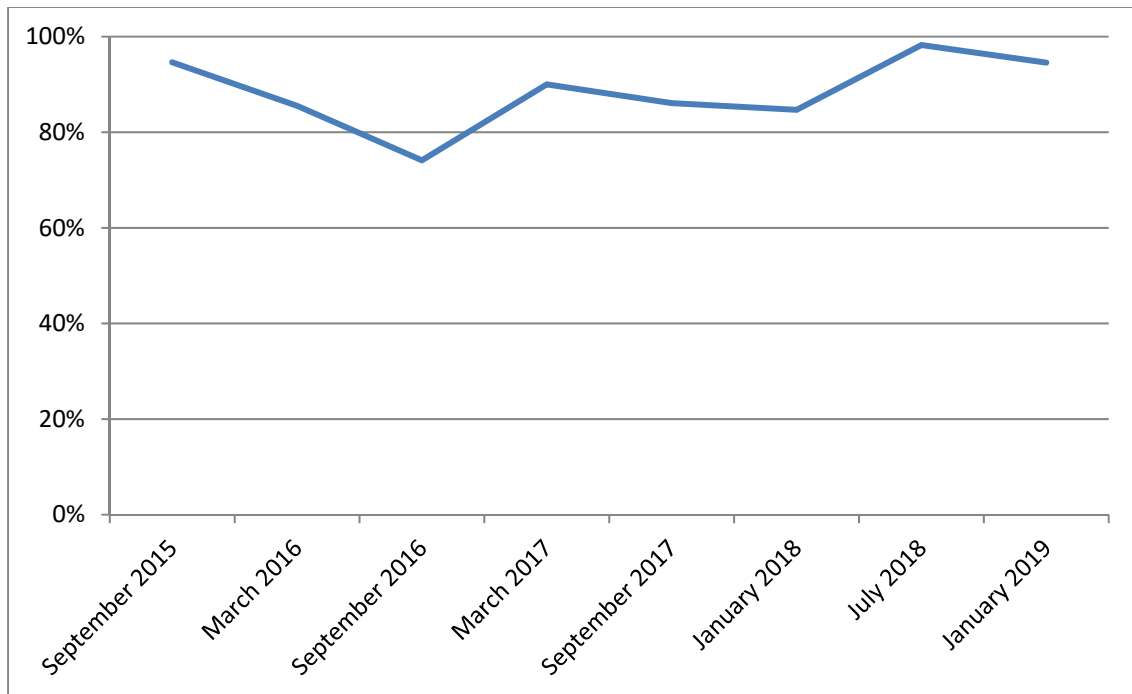


The Pediatric Center Clinical Quality Measures

The Pediatric Center strives daily to ensure that our patients receive the highest possible level of care. We follow the American Academy of Pediatrics' Bright Futures recommendations for proactive preventative primary care, and recommend the immunization schedule endorsed by the AAP and the Advisory Committee on Immunization Practices (ACIP).

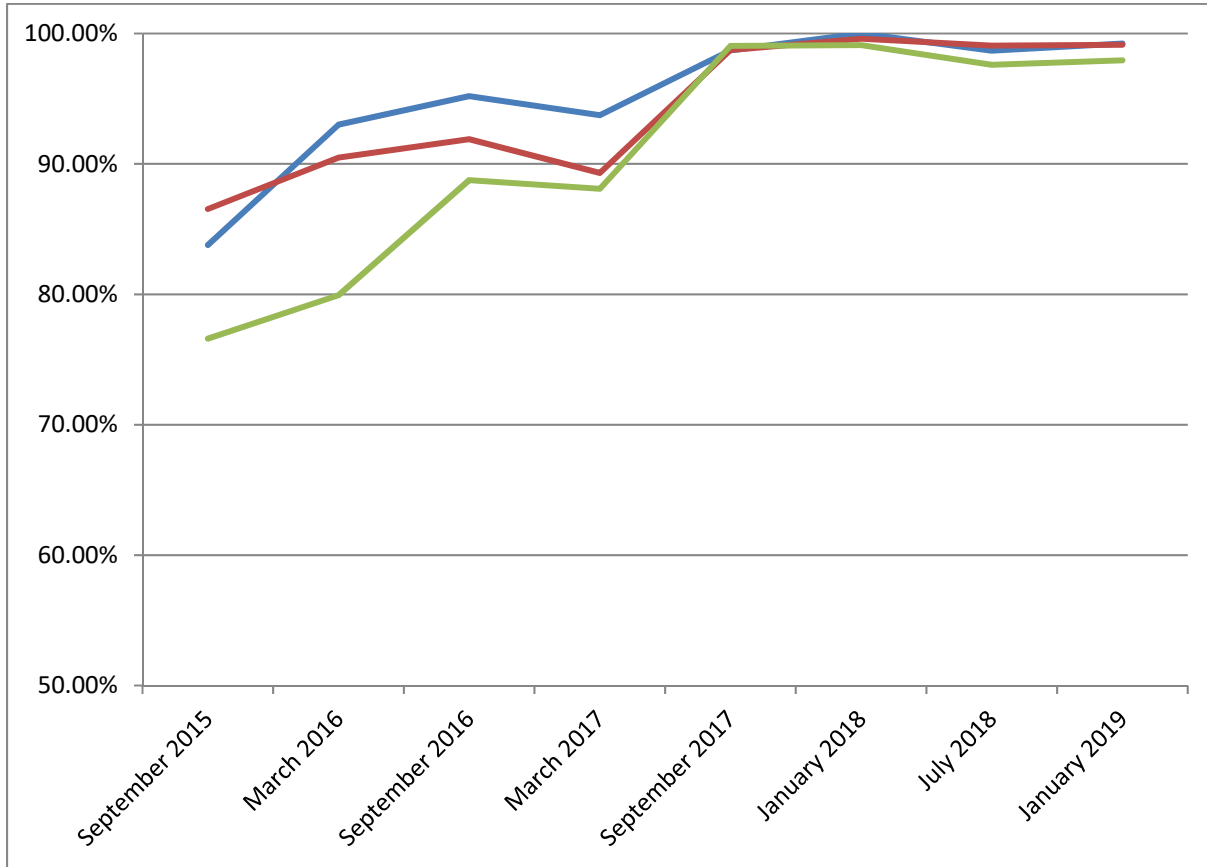
To ensure our continual progress toward our goals, we regularly measure our levels of compliance with the recommendations. The intention is to understand our strengths and also opportunities for improvement.

Percentage of patients that have received appropriate screening for Anemia



The American Academy of Pediatrics recommends that all patients be screened for Anemia at one year of age. The Pediatric Center continues to work toward raising our rates of anemia screening.

Percentage of Patients that have received Age Appropriate Developmental Screenings



Regular screening for proper development ensures that we discover any concerns at the earliest possible stage. Early diagnosis and treatment of developmental delays can greatly improve our patient's prognosis and future.